

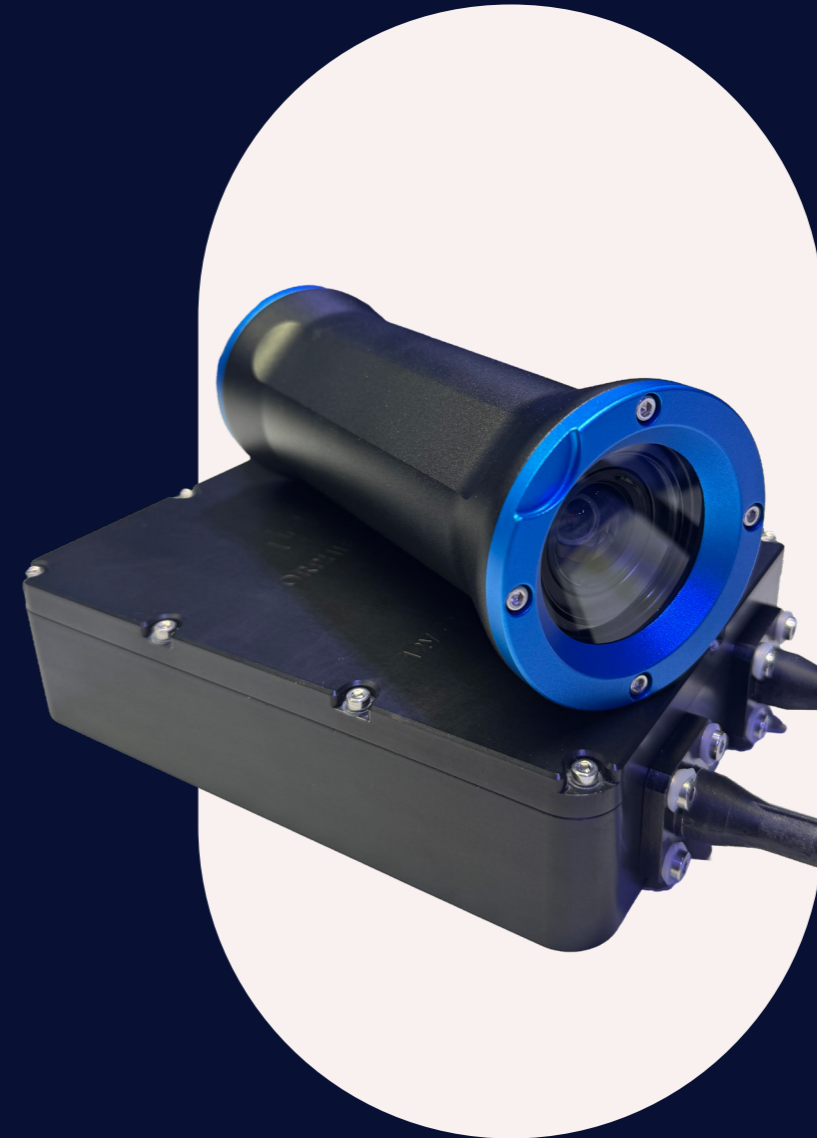


Orpheo

Custom software for Orphie cameras

All camera parameters configurable from a single software
→ Bitrate, size of stream, network management...

Other additional features
→ Digital zoom, snapshot, record...



Orphie 300 mini

About the company

For 45 years, i2S has been the expert in high-quality image capture and processing, applied to most complex and challenging imaging projects in various fields, but also growing a unique know-how to become the leader in subsea imaging technology that became a dedicated business unit called Orphie.

Orphie 300 mini

The best camera for mini ROV



At least x2 visibility distance



Real time processing



Low latency



Lightweight and compact

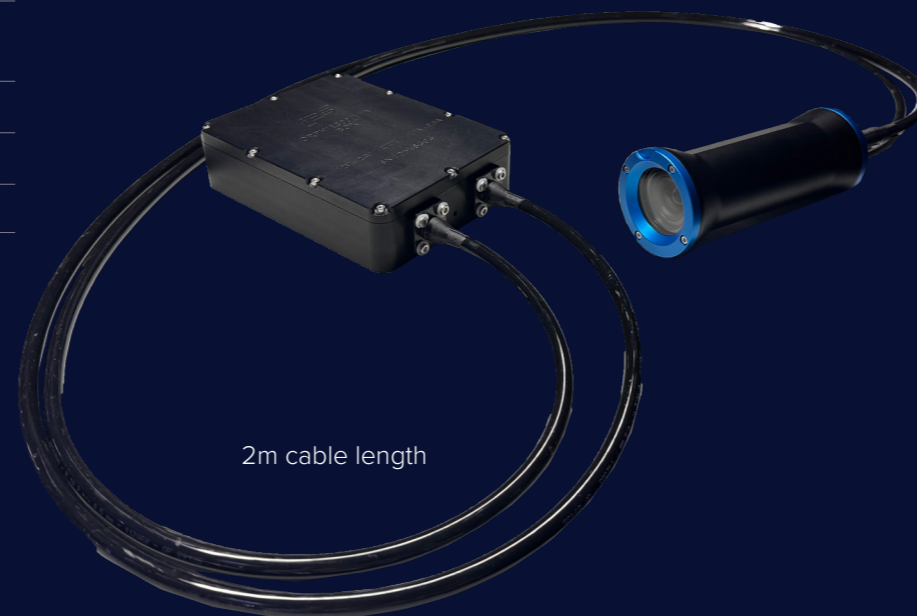
Technical specifications

Orphie 300 mini camera

| | |
|--------------------------------|--|
| Sensor | 2/3" CMOS color sensor |
| Optical resolution | 1224 x 1024 |
| Frame rate | 20 fps |
| Latency | ~200ms |
| FOV | Air : 86°(D) / 75°(H) / 58°(V) Water : 62°(D) / 54°(H) / 40°(V) |
| Lens material | Tempered Borofloat |
| Housing material | Anodized aluminium |
| Dimensions (without connector) | L=163mm ; ø=72mm |
| Weight (air/water) | 750g/165g |
| Connector | Aquamouse Glenair |
| Depth rating | 300m |

Orphie 300 mini processing box

| | |
|--------------------------------|-------------------------------|
| Dimensions (without connector) | L=136mm ; W=185mm ; H=47mm |
| Weight (air) | ~2400g |
| Housing material | Hard anodized aluminium |
| Power requirements | 12-24V |
| Output | Ethernet |
| Depth rating | 300m |



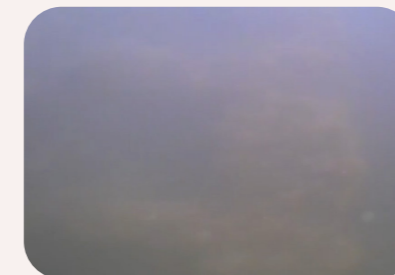
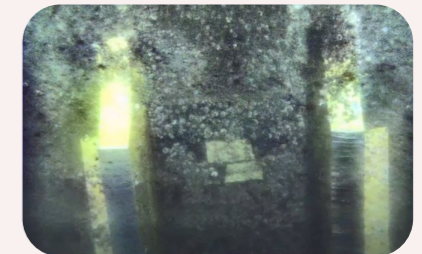
→ Example of integration



Standard camera



Orphie camera



« I would **definitely recommend the Orphie camera within my own team but definitely not to my competitors because the camera brings us quicker efficiency**»

ROV manager